

**HOUSING AND COMMUNITY SAFETY ADVISORY COMMITTEE**  
**29 April 2014 at 7.00 pm**

Further to the recent despatch of agenda and papers for the above meeting, please find attached updated information that has become available since the despatch of the agenda papers.

9. **Sevenoaks District Community Safety Strategy & Action Plan 2014/15** (Pages 1 - 32)

To assist in the speedy and efficient despatch of business, Members wishing to obtain factual information on items included on the Agenda are asked to enquire of the appropriate Director or Contact Officer named on a report prior to the day of the meeting.

Should you require a copy of this agenda or any of the reports listed on it in another format please do not hesitate to contact the Democratic Services Team as set out below.

For any other queries concerning this agenda or the meeting please contact:

**The Democratic Services Team (01732 227241)**

This page is intentionally left blank

# Sevenoaks District Community Safety Partnership

## Annual Action Plan 2014 - 2015



**Contents**

Introduction ..... 4

Priority Issues for 2013 – 2014 ..... 5

Sevenoaks District Community Safety Partnership – Action Plan 2014-15 ..... 7

Success Measures ..... 7

Burglary ..... 8

Vehicle Crime ..... 10

    Theft of a Pedal Cycle ..... 10

ASB incl Environmental Crime ..... 12

    Fly Tipping ..... 12

    Abandoned Vehicles ..... 12

    Graffiti ..... 12

Young People ..... 14

    Not in employment, education or training (NEET) ..... 14

    Schools ..... 14

Domestic Abuse ..... 17

Substance Misuse ..... 19

    Drugs ..... 19

    Alcohol ..... 19

    Smoking ..... 19

Theft Offences incl Shoplifting.....	22
Theft and Handling of Stolen Goods.....	22
Metal Theft .....	22
Shoplifting.....	22
Road Safety incl Speeding.....	24
Speed Watch .....	24
Glossary:.....	26
Membership of the Community Safety Partnership and contact details .....	28
Terms of Reference.....	29
Structure of Sevenoaks District Community Safety Partnership .....	30
Sevenoaks District map.....	31

This publication is available in large print. For a copy call (01732 227414).  
[www.sevenoaks.gov.uk](http://www.sevenoaks.gov.uk)  
 If you need help communicating with us or understanding this document, we can arrange for an interpreter to help you.  
 Please contact us on 01732 227000 stating your language and telephone number

## Action Plan 2014-15

### Introduction

The Sevenoaks District Community Safety Partnership brings together all of the agencies in the District who can have an impact on crime, anti-social behaviour and the fear of crime. A list of partners is set out on page 28. The Partnership has 3 key aims. They are to:

- Reduce and detect crime
- Reduce anti-social behaviour and the fear of crime
- Strengthen community involvement

Each year the Partnership, in common with all Community Safety Partnerships, undertakes an assessment of crime and disorder in the District, using data provided by partners and feedback from residents. The assessment identifies the priority issues for the next year using the following rationale for each community safety type:

- Whether there is significant community concern
- Whether there is an increasing trend
- Whether it contributes to a high volume of crime
- The level of harm it causes
- How well it is performing compared with other parts of Kent and similar partnerships nationally
- Whether the Partnership can add value to the work

**This Action Plan identifies where we can best work together to achieve results**

## Priority Issues for 2013 – 2014

The Strategic Assessment undertaken during the winter of 2013 has identified 8 priorities for the Partnership to tackle during 2014-2015. The data referred to in this Action Plan is based on the Strategic Assessment, which uses data between October 2012 and September 2013. Trends in the identified priorities continue to be monitored on a quarterly basis and the first monitoring will be available in July 2014.

The 8 priorities, in no particular order, are:

- Anti-Social Behaviour (including Fly-Tipping)
- Burglary (Burglary Other than Dwelling and Burglary Dwelling)
- Theft Offences (including Shoplifting, Theft of Metal and Theft Offences)
- Substance Misuse
- Young People's Issues
- Vehicle Crime (Theft of Motor Vehicles and Theft of Motor Vehicles)
- Domestic Abuse
- Road Safety

Although the Partnership's main focus will be the 8 priorities, it will continue to monitor and plan for trends in crime and other community safety issues and address them through the Community Safety Unit's daily briefings and other tasking arrangements in order to reduce recorded crime.

Between 1 April 2013 and 31 March 2014, Sevenoaks District had the third lowest victim based recorded crime in the County. However there was an increase in crime compared to the same period last year (April 2012 – March 2013) with the number of crimes increasing from 4986 crimes to 5345.

### The Action Plan

The following pages set out the overall targets for the Community Safety Partnership and an action plan is linked to each priority. The action plan does not include details of the numerous activities already undertaken by partners, town and parish councils, the voluntary sector and others as part of their day to day work, but highlights activities in addition to core work, which partners will undertake throughout the forthcoming year. All priorities include actions around public perception.

**Funding and monitoring**

Funding for the actions included within the Action Plan is available from a number of sources, including partners' own budgets, Police & Crime Commissioner's (PCC) funding which is allocated to district Community Safety Partnerships, Choosing Health funding and other small amounts of funding from a variety of sources, for example the Kent People's Trust. Regular monitoring will take place to ensure that individual projects continue to deliver positive results as well as value for money and that this Action Plan is on target.

**Equalities**

In preparing the action plan, issues such as equality and diversity were considered to ensure that everybody feels safe in the District.



## Sevenoaks District Community Safety Partnership – Action Plan 2014-15

### Success Measures

#### **All recorded crime**

All Victim Based Crime reduced compared with the previous year

#### **Burglary**

Number of Burglary Dwelling to be reduced compared with the previous year

Number of Burglary other than Dwelling (shed, commercial/retail premises) to be reduced compared to previous year

#### **Vehicle Crime**

Number of Theft of Motor Vehicles to be reduced compared with the previous year

Number of Theft from Motor Vehicles to be reduced compared with the previous year

#### **Anti-Social Behaviour**

An improvement in behaviour achieved in 80% of cases accepted by the Anti-Social Behaviour Task Group.

75% of Anti-Social Behaviour victims satisfied with action taken.

#### **Young People's issues**

Intervention projects and positive media for young people to be maintained

The number of young people entering the criminal justice system for the first time to be reduced.

#### **Theft offences & handling stolen goods (incl shop lifting, theft of metal & metal offences)**

Reduce the number of theft offences compared to same period last year

#### **Domestic Abuse**

Increase number of referrals to local services & Domestic abuse action plan to be 80% on target

#### **Substance Misuse**

Substance Misuse Action Plan to be 85% on target

#### **Speeding incl Road Safety**

Communities in areas where speeding has been identified as a top 3 priority involved in a range of speeding initiatives.

## Burglary

Burglary is divided into Burglary Dwelling and Burglary Other offences. Although individually these offences account for a relatively small percentage of total crime in the District (8.8% and 13.6% respectively), rates are higher than County and MSG<sup>1</sup> averages. This year the Sevenoaks District ranked as 3<sup>rd</sup> highest for dwelling offences and 1<sup>st</sup> highest for other burglary offences in County comparisons. The District has the 2<sup>nd</sup> highest rate of dwelling offences and 1<sup>st</sup> highest rate of other burglaries in its MSG.

Between October 2012 and September 2013, Burglary Dwelling saw a 27.8% increase, with the number of offences rising to 478. Burglary Other Than Dwelling (BOTD) this saw a 30.6% increase, with the number of offences rising to 789.

Updated figures: April 2013 – 31 March 2014 in Sevenoaks District, there were 421 reports of Burglary Dwelling (32 fewer than the same period last year) and was 8<sup>th</sup> highest across the county and there were 743 Burglary other than Dwelling offences (and additional 21 compared to same period last year) and was 10<sup>th</sup> highest in across Kent.

---

<sup>1</sup> A Group of Partnerships thought by the Home Office to have similar characteristics and used for benchmarking purposes

Priority Action		Lead Agency	Other Partners	By When	Funding
<b>Burglary (Dwelling and BOTD)</b>					
1.1	Proactively target action on hot spot areas using Pred Pol data through the monthly Tasking & Co-ordination Group	CSU	Police Housing Assns KCC Wardens	April 2014	Existing Budgets
1.2	Work with Town and Parish Council and Neighbourhood Watch to help educate residents secure their property through communicating effective advice	CSU	Police KCC Wardens	April 2014	Existing Budgets
1.3	Expand role of Priority and Prolific Offenders to help support intervention for prisoners under 21 who have received 12months or less for Burglary crimes	Probation Service	Police CSU	Sept 2014	Existing Budgets
1.4	Continue to deliver Smart Water to vulnerable and repeat victims of Burglary & Burglary other than Dwelling across the District	KCC Wardens	CSU	On-going	Existing Budgets
1.5	Through Media campaign use local celebrities to help promote CSU and education of Burglary & BOTD through Twitter & Face book	CSU	Police Housing Assns KCC Wardens	April 2014	Existing Budgets
1.6	North West Kent Crime Prevention Panel (NWKCPP) to attend village days/fetes across the District promoting Home Security	NWKCPP	CSU	On-Going	Existing Budgets

**Vehicle Crime**

Vehicle crime is up by 8% on last years figures, (Oct 2012-Sept 2013) with the District recording 805 crimes ranking the 3<sup>rd</sup> highest in the County (crimes per thousand population) and, 2<sup>nd</sup> highest in its MSG.

Kent Police categorise vehicle crime as Theft from a Motor Vehicle (TFMV) and Theft of a Motor Vehicle (TOMV). The figure for TFMV stands at 590 this year, this is up 12.2% on last year’s figures and the District is the 3<sup>rd</sup> highest in Kent, 4<sup>th</sup> in its MSG. Despite a slight reduction of 2.7% bringing the total number of TOMV to 215 this year, the District still ranks comes 2<sup>nd</sup> highest in the County **and** MSG (crimes per thousand population).

Updated figures: April 2013 – 28 Feb 2014 in Sevenoaks District, there were 560 reports of TFMV (+64 compared to same period last year) and improving to 5<sup>th</sup> highest across the County. There were 167 TOMV offences (34 fewer than the same period last year) and improving to 5<sup>th</sup> highest in across Kent.

**Theft of a Pedal Cycle**

There were only 38 offences being recorded this year. Sevenoaks District ranks 1<sup>st</sup> lowest in Kent and 2<sup>nd</sup> lowest in its MSG, having had a 11.9% reduction on last year’s figures.

Updated figures: April 2013 – 31 March 2014 in Sevenoaks District, there were 34 reports of Theft of a Pedal Cycle. (5 fewer than the same period last year). Sevenoaks District had the lowest pedal cycles thefts in the county.

Priority Action		Lead Agency	Other Partners	By When	Funding
<b>VEHICLE CRIME (TOMV &amp; TFMV)</b>					
2.1	Target Beauty Spot locations and work with trusts and rangers to raise awareness, high visibility patrols and usage of wildlife cameras	CSU	Police National Trust KCC Wardens	April 2014	Existing Budgets
2.2	Promote Safe Plates, work with local dealerships and promote service through PCSO surgeries	CSU	Police	May 2014	Existing Budgets
2.3	Expand role of Priority and Prolific Offenders to help support intervention for prisoners under 21 who have received 12months or less for Burglary crimes	Probation Service	Police CSU	Sept 2014	Existing Budgets
2.4	Targeted work through the Tasking & Co-ordination Group to identify hotspot locations and be proactive in those areas, use Pred Pol data	Police	CSU	April 2014	PCC Budget

Page 11

## **ASB incl Environmental Crime**

Evidence shows that ASB remains one of the priority issues within Sevenoaks District among residents. ASB accounts for the largest recorded issue when compared with crime in the District and makes up 34.4% of total crime when included in crime statistics. Figures show 2,297 recorded incidents of ASB occurring within the District and reported to Kent Police Oct 2012-Sept 2013; this is the lowest number of ASB reports in Kent and falls well below the County average number of reports (4,174). All districts and boroughs reported a decrease in ASB, the Sevenoaks District saw a total reduction of 8.2% (206 offences) which is less than the County average reduction of 14.9%.

There has been a 24.7% reduction in the number of reports to the District Council's Anti-Social Behaviour Officer. The total number of calls received was 143 (47 fewer calls than last year).

The County average has been decreasing since 2010, however the number of ASB incidents in Sevenoaks District has seen slight fluctuations during this time.

Sevenoaks District Council's (SDC's) CCTV Room reports ASB as the single highest recorded incident.

MOAT Homes identified 'Noise' complaints as the highest reported for of Anti-Social Behaviour. West Kent Housing received 337 complaints of ASB this year. Complaints of 'Noise' were significantly reduced by 44% (72 reports) from 166 to 94.

Updated figures: Between April 2013 and 31 March 2014 in Sevenoaks District, there were 2146 reports of ASB (254 fewer than the same period last year) and Sevenoaks District had the lowest number of reports across the county. In the same period there were 152 calls to the Council's ASB Officer, a reduction of 2 report compared to same period last year.

### **Fly Tipping**

Fly tipping has seen a slight rise this year and remains one of the most prominent issues. The Sevenoaks District Direct Services received 744 reports of fly tipping (a 24% increase and 126 more reports than the previous year), with 380 of them removed. It is worth noting that an increase in reports does not necessarily indicate an increase in incidents, with often more than one report per incident.

### **Abandoned Vehicles**

There has been a 20% rise in reports of abandoned vehicles over the last year, with 108 reports being made to SDC and 12 vehicles being removed. Most reports came from the more densely populated areas of Sevenoaks, Swanley and Edenbridge. The low proportion of vehicles removed is in the most part due to the vast majority of those vehicles reported either being driven or declared SORN (Statutory Off Road Notice) and parked off-road.

### **Graffiti**

Graffiti reports to the Council have risen by 34% (10 reports) this year with 39 recorded incidents. There were 12 offensive graffiti reports between October 2013 and September 2013 all of which were removed within the 48 hour deadline set by Direct Services.

	Priority Action	Lead Agency	Other Partners	By When	Funding
<b>ASB Incl Environmental Crime</b>					
3.1	Increase number of prosecutions for fly tipping through camera deployment	KCC Clean Kent CSU	KCC Wardens PCSOs Housing Assns	March 2015	Existing Budgets
3.2	Proactively celebrate good news stories through InShape, Partners publications and through Social Media	CSU	Housing Assns	March 2015	Existing Budgets
3.3	Promote legal ways to dispose of rubbish and promote the Moat promise to deter fly tipping.	CSU	SDC Housing Assns KCC Wardens	Sept 2014	Existing Budgets
3.4	Deploy mobile cameras across the District to deter ASB and Criminal Damage through the Tasking & Co-ordination Process	CSU	Police Housing Assns	On-Going	Existing Budgets
3.5	Work with specific families through the Troubled Families Project	KCC	SDC Housing Assns Faith Community ASB Task Group	On-Going	Existing Budgets
3.6	Work with communities to reduce ASB through PACTs and EVAs	CSU	All Partners	On-Going	Existing Budgets
3.7	Respond to ASB issues through the daily Tasking Process and report back in 100% of cases	CSU	All Partners	On-Going	Existing Budgets

## Young People

There has been a reduction in the number of young offenders (under 18 years) for the third consecutive year, with figures for the District falling from 104 offenders to 70 over the period July 2012 to June 2013, representing 0.6% of the total District population of 10 to 17 year olds. This is the District has the 2<sup>nd</sup> lowest rate of young offenders in the County, significantly below the Kent average of 1.0%.

In line with the overall reduction in the number of young offenders, the total number of youth offences recorded in the District has dropped from 220 to 146 (July 2012 – June 2013). This is a reduction of 33.6% (74 offences), which is the largest rate of reduction in the County and places Sevenoaks 2<sup>nd</sup> best in Kent.

### Not in employment, education or training (NEET)

Using CXK's figures for October 2013, the number of young people recorded as NEET in Sevenoaks District has decreased from 93 to 89 (a reduction of 4.3%) over a 12 month period. This is the joint smallest recorded number of NEETs in the County. Despite the reduction in numbers, the proportion of 16 to 18 year olds who are classed as NEETs has gone up from 4.7% to 5%.

### Schools

Sevenoaks District ranks 1<sup>st</sup> in the County with the lowest recorded number of fixed term exclusions and a continued reduction over the last three academic years. In the 2012 - 2013 academic year, 33% (120) fewer pupils living within the District received fixed term exclusions with a total of 244 pupils excluded from schools within the Sevenoaks District during this period.

The CSP has identified a need to focus on e-safety and cyber bullying.



Priority Action		Lead Agency	Other Partners	By When	Funding
<b>YOUNG PEOPLE</b>					
4.1	Work more proactively with KIIASS	KIIASS CSU	All Partners	March 2015	Existing Budgets
4.2	Set up a data monitoring system to identify young people's issues	CSU	KIIASS CXK Kenward Trust	June 2014	Existing Budgets
4.3	Maintain low level number of young people entering the criminal justice system for the first time	KIIASS Commissioned Youth Services	Police YISP Housing Assns CSU Kenward Trust (KIP program)	March 2015	Existing Budgets PCC Budget
4.4	Target detached youth work through the CSU	CSU KIIASS Kenward Trust	Police Housing Assns KCC Warden	On-Going	Existing Budgets PCC Budget
4.5	Continued promotion of E-Safety creating a centre for resources and continued cyber bullying programmes. Explore CEOP resources	SDC KCC	CSU KIIASS KCC Education	May 2014	Existing Budgets
4.6	Work with partners to help young people transition from Education to Employment	KIIASS LSP	SDCYP West Kent Partnership CSU	June 2014	Existing Budgets

	<b>Priority Action</b>	<b>Lead Agency</b>	<b>Other Partners</b>	<b>By When</b>	<b>Funding</b>
4.7	SAFE- Support and Develop Services in Health Suicide Awareness for everyone	KCC Public Health	SDC KIASS VAWK	Sept 2014	Existing Budgets
4.8	Promote work with young people	CSU	KIASS VAWK	On-Going	Existing Budgets

## Domestic Abuse

Domestic abuse has seen a marginal increase in the number of incidents and the number of repeat victims this year October 2012-September 2013. There have been an additional 16 incidents of Domestic Abuse recorded within the Sevenoaks District which represents a 1.8% increase on the previous year. The Sevenoaks District has seen a similar increase in the number of recorded repeat victims of Domestic Abuse with 3.5% more (7 reports, totalling 209).

Whilst on the surface this could reflect an absolute rise in cases of domestic abuse, the increase could also be interpreted positively with more people feeling able to come forward and report domestic abuse to the Police. It is important to remember that these figures are those reported to the Police and it is widely recognised that there is a high number of domestic abuse incidents which remain unreported.

Updated figures: Between April 2013 and 28 February 2014 in Sevenoaks District, there were 876 reports of Domestic Abuse. (an additional 37 compared to same period last year). Sevenoaks District had the lowest number across the County. There were 215 repeat victims (an additional 25 compared to same period last year) and again the lowest in the County.

Priority Action	Lead Agency	Other Partners	By When	Funding
<b>DOMESTIC ABUSE</b>				
5.1	Raise awareness and sign posting to local and county wide services and resources including refuges, particularly targeting repeat victims	CSP Domestic ASB Group	All Partners KCC Youth Services	On going Existing Budgets
5.2	Focus on young people and healthy relationships. Dedicated resources across the District using National campaigns and local services	DAVSS DA Working Group	VAWK KIASS	June 2014 Existing Budgets
5.3	Continue to support local funded programmes such as CDAP, ISVA, Freedom, DA Drop In Centre & Youth project. Work to increase numbers attending these programmes	Domestic Abuse WG	All Partners	March 2015 Existing Budgets
5.4	Review “Drop-in” Service outcomes and divert service if necessary	DA Working Group	DAVSS NK Women’s Aid	May 2014 Existing Budgets
5.5	External Evaluation of DA Services funded by CSP	CSP	DAVSS ISVA NK Women Aid	Sept 2014 Existing Budgets
5.6	Consider Domestic Abuse as a marker for Phase 3 of Troubled Families	KCC SDC	DA Working Group	April 2014 Existing Budgets
5.7	Joint meeting with Substance Misuse mid year to take forward joint projects	SDC	Substance Misuse Group DA Working Group	September 2014 Not Applicable

## Substance Misuse

### Drugs

Since April 2013, substance misuse is no longer recorded in the Victim Based Crime figures released by Kent Police. However, figures collated in iQuanta show total drug offences are up 32.3% (43 offences) with 176 recorded this year. Despite this, Sevenoaks has the lowest rate in the County and ranks 1<sup>st</sup> in Kent and 2<sup>nd</sup> in its MSG.

Drug offences include possession and trafficking of drugs. Possession is up 53% in the District and 158 crimes were recorded October 2012-September 2013. Again, despite the increase, the District performs well and ranks 2<sup>nd</sup> best in Kent **and** MSGs.

Updated figures: Between April 2013 and 31 March 2014 in Sevenoaks District, there were 181 drug offences. (an additional 40 compared to same period last year). Sevenoaks District had the 2<sup>nd</sup> lowest number of offences across the County.

### Alcohol

Until recently, alcohol misuse was measured using alcohol attributable hospital admission rates which have been increasing year on year on a District and County level<sup>2</sup>. It is generally felt that these rates no longer accurately reflect alcohol admission trends as some 'attributable' conditions have undergone massive rises in admission rates over recent years and this is only partly attributable to alcohol. The clearest example is Hypertension, admission for which has dramatically increased and is recorded as attributable, despite approximately 20% cases being alcohol attributed.

According to the Kent Drug and Alcohol Action Team (KDAAT) there are an estimated 30,432 dependant drinkers and 17,410 binge drinkers in the County. Most recent figures provided by KDAAT recorded 821 Kent residents in receipt of treatment for alcohol June 2013. Young Persons data shows a 14.6% reduction in the number of young people receiving treatment for alcohol with 310 in treatment (April 2012 to March 2013).

### Smoking

Public Health profiles for 2013 show the Sevenoaks District to have lower rates of smoking-related deaths than the England average. 16.4% of the District population was estimated to smoke in 2013, compared to the 21% County average and 20% England average.

---

<sup>2</sup> Kent has seen a steady increase of alcohol related hospital admissions over the past ten years and alcohol remains the most common substance for those seeking treatment; this year (June 2012 to May 2013) hospital admissions for evidence of alcohol involvement by Blood Alcohol has seen a Countywide increase of 76 (8.2%). Sevenoaks has seen the sharpest rise in numbers during this period (45.5%, 25 additional residents), making a total of 80 alcohol related hospital admissions this year.

Priority Action		Lead Agency	Other Partners	By When	Funding
<b>SUBSTANCE MISUSE</b>					
6.1	Preventative and early intervention youth work to address identified local needs and improve well-being of young people	KCA Substance Misuse TG Kenward Trust	KDAAT KCC Youth Services Early Intervention Team	On going	Choosing Health CSP Alternative funding PCC budget
6.2	Use a partnership approach to address underage drinking where it is reported by communities as a problem	Trading Standards	Landlords/Off License Substance Misuse Task Group KDAAT	June 2014	Existing budgets
6.3	Address work around Legal Highs and prescribed medication. Training and support for front line workers	Substance Misuse TG	CRI  Kenward Trust  KCA	On going	Existing Budgets
6.4	Use of Social Media to get information to all residents across the District with a focus on young people	CSU	Police KIASS KCA Residents & Youth Forums	On going	Existing Budgets
6.5	Structured interventions through Troubled Families where Substance Misuse is an issue	Substance Misuse Task Group	Kenward Trust Troubled Families CSP	On going	Troubled Families

	<b>Priority Action</b>	<b>Lead Agency</b>	<b>Other Partners</b>	<b>By When</b>	<b>Funding</b>
6.6	Create "Recovery Communities" such as Non Alcohol Bars and Social Enterprises	Substance Misuse Task Group	Kenward Trust KCA  All Partners	Sept 2014	Grants
6.7	Work with local employers to raise awareness on drug and alcohol issues and where to go for early interventions	Kenward Trust	Substance Misuse Task Group Local Business Forum	Sept 2014	Public Health Boards

## Theft Offences incl Shoplifting

Theft Offences have been reduced by 5%, with 38 fewer offences recorded between October 2012 and September 2013 than the previous year. Despite only a minor reduction of 5% this year, the Sevenoaks District still has the 2<sup>nd</sup> lowest rate per 1000 population in the County. In contrast, the District has the 9<sup>th</sup> lowest rate, just below average, in its MSG.

### Theft and Handling of Stolen Goods

As expected there has been a similar decrease in recorded offences for theft and handling of stolen goods. A 1.8% reduction (21 offences) has seen recorded crimes drop from 1191 to 1170 over the last year.

Updated figures: Between April 2013 and 31 March 2014 in Sevenoaks District, there were 865 reports of Theft & Handling (16 fewer compared to same period last year) and Sevenoaks District had the 2<sup>nd</sup> lowest offences across the county.

### Metal Theft

Data on metal theft was collected for the first time in April 2012, allowing for some comparison in the year's strategic assessment. Recorded figures have dropped significantly from 171 to 129 (a crime reduction of 24.6%, with 42 fewer cases).

Updated figures: Between April 2013 and 31 Jan 2014 in Sevenoaks District, there were 87 reports of metal thefts (115 fewer compared to same period last year) and Sevenoaks District had the 6<sup>th</sup> highest number of offences across the county.

### Shoplifting

Sevenoaks District has seen a slight increase in the number of shoplifting offences this year, but when we take a look at the figures for the last three years, we see that on average monthly figures are reducing. Looking at the figures for April 2012 to March 2013, the District has achieved a crime reduction of 15.7% (62 offences) and has the lowest crime rate in the County. However if we look at more recent figures from October 2012 to September 2013, shoplifting has increased by 9 offences (2.5%), from 359 to 368. Despite the fluctuation, Sevenoaks' performance remains the best in the County and 6<sup>th</sup> best in its MSG.

Updated figures: Between April 2013 and 31 March 2014, there were 409 reports of Shoplifting. (40 more compared to same period last year and the lowest in the county).



Priority Action		Lead Agency	Other Partners	By When	Funding
<b>THEFT incl SHOPLIFTING</b>					
7.1	Develop and expand the Business Crime Reduction Partnership across Sevenoaks District to include Safer Socialising	BCRP	CSU Economic Development	June 2014	Existing resources
7.2	Target repeat offenders of acquisitive crime through the Offender Management Unit	Probation Police BCRP	CSU	April 2014	Existing resources
7.3	Publicise arrests and convictions through Social Media especially around BCRP work	SDC Police	BCRP	April 2014	Existing Budgets
7.4	Co-ordinated multi agency operations concerning retail theft and enhance visibility such as Safer Plates ops in retail car parks	Police	CSU	April 2014	Existing Budgets
7.5	Develop email groups to send out bespoke messages for specific themed retailers	BCRP	CSU	April 2014	Existing Budgets
7.6	Joint visits with BCRP to help identify hard to reach local management and seek to engage at a higher level	BCRP PCSOs	CSU	April 2014	Existing Budgets

**Road Safety incl Speeding**

Throughout Sevenoaks there are major trunk roads i.e. M25/A21 which facilitate the majority of traffic through the District. As a result figures for Road Traffic Accidents (RTAs) fluctuate depending on the area that is being assessed.

Jacobs figures released for January to September 2013 show a slight reduction (3.8%) in RTA casualties in the District compared with the same period last year. 407 RTA casualties were recorded during this period and the Sevenoaks District has one of the highest RTA casualties in the County, second to Maidstone. 12.8% of all RTA casualties were Killed or Seriously Injured (KSI) with Sevenoaks District reporting the highest number of KSI RTA casualties in the County.

**Speed Watch**

Speeding and perception of speed is a high concern for residents across the District and has featured in all PACT Panels' action plans. The community safety survey conducted in December 2013 shows 'road safety/speeding' to be the biggest concern, with 54.8% respondents describing themselves as 'very concerned'. Speed Watch training has worked well in the District with residents being trained by Kent Police to monitor the speed of vehicles passing through their community. In November 2013 a total of 29 District locations were used for Speed Watch and there have been over 100 residents trained, over a quarter of all volunteers in Kent. Between December 2012 and November 2013, a total of 2,090 letters were sent out to the owners of vehicles speeding within the District thanks to the Speed Watch initiative.

Priority Action		Lead Agency	Other Partners	By When	Funding
<b>ROAD SAFETY</b>					
8.2	Identify parking hotspots and work with agencies and residents on local concerns	Police KCC Highways SDC	CSU	June 2014	Existing Budgets
8.2	Identify repeat callers around speeding and traffic issues and have a joint response for residents and Town and Parish Councils	CSU	All Partners	June 2014	Existing Budgets
8.4	Continue with Speed Watch. Identify a cohort of volunteers who could be tasked across the District to speeding hotspots	CSU	Police Volunteers	June 2014	Existing Budgets
8.5	Minimum of 4 Multi-Agency events to address speed enforcement	Police KFRS	CSU All Partners	March 2015	Existing resources
8.6	Education on road safety to be delivered through schools including Pedestrian and Cycle Safety	KFRS Police	CSU	June 2013	Existing resources KFRS

**Glossary:**

ASB – Anti-Social Behaviour

BCRP – Business Crime Reduction Partnership

CCTV – Closed Circuit Television

CDAP – Community Domestic Abuse Perpetrators Programme

CSP – Community Safety Partnership

CSU – Community Safety Unit

CXK - Connexions

DAVSS – Domestic Abuse Volunteer Support Services

EVA – Environmental Visual Audit

ISVA – Independent Sexual Violence Advisor

KCA – Drug, Alcohol and Mental Health Services

KCC – Kent County Council

KDAAT – Kent Drug & Alcohol Action Team

KFRS – Kent Fire & Rescue Service

KIASS – Kent Integrated Adolescent Support Service

MSG - A Group of Partnerships thought by the Home Office to have similar characteristics and used for benchmarking purposes

NEET – Not in Education, Employment or Training

PACT – Partners and Communities Together

PCC – Police & Crime Commissioner

PPO – Persistent and Prolific Offender

SDC – Sevenoaks District Council

T&CG – Tasking and Co-ordination Group – monthly meeting to plan response to trends

VAWK – Voluntary Action Within Kent

YISP – Youth Inclusion Support Panel

YOS – Youth Offending Service

## Membership of the Community Safety Partnership and contact details

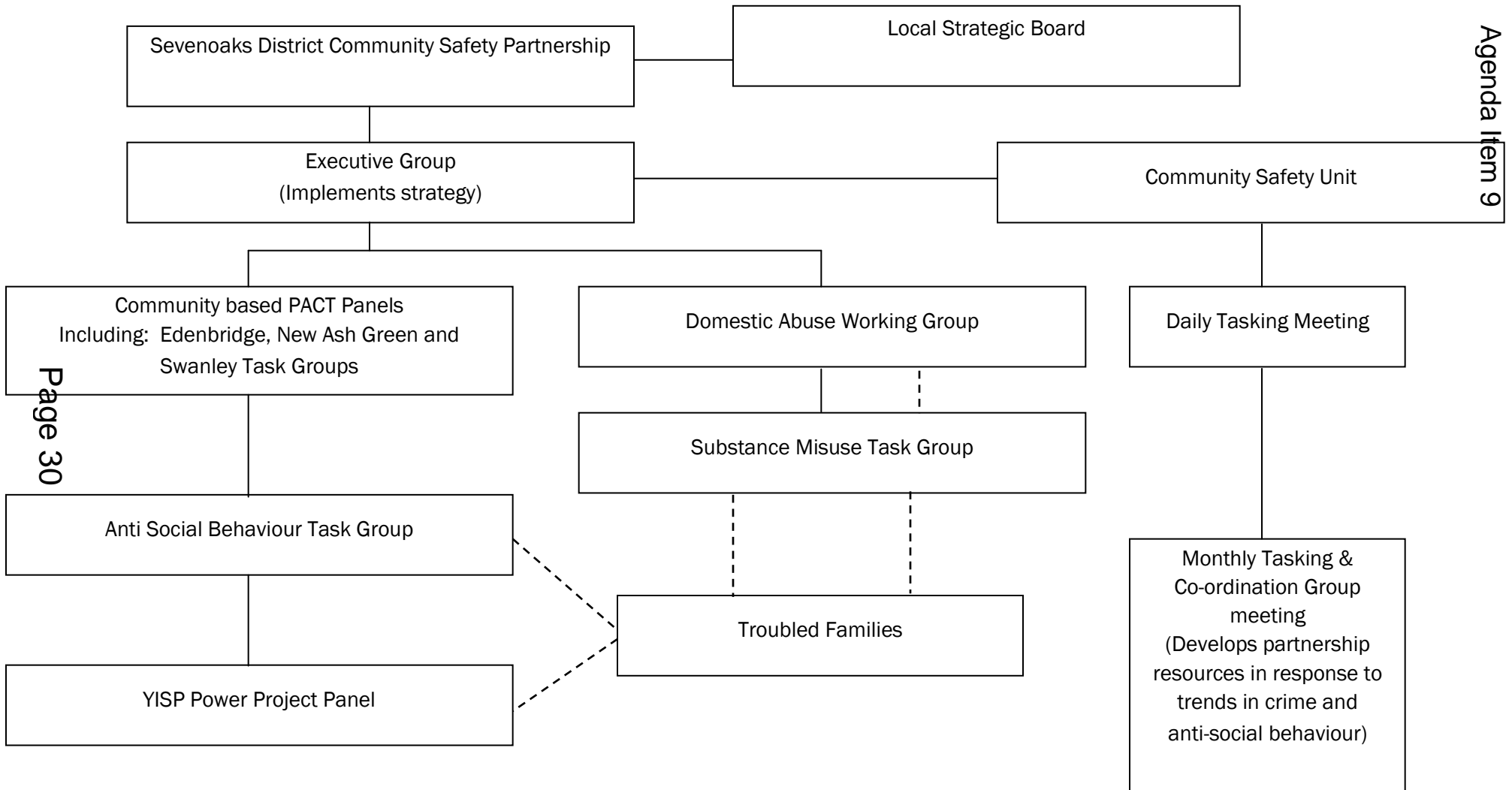
<p><b>Sevenoaks District Council</b> Argyle Road Sevenoaks Kent TN13 1GP Tel: 01732 227000 Web: <a href="http://www.sevenoaks.gov.uk">www.sevenoaks.gov.uk</a></p>	<p><b>Kent Police</b> 1 Pembury Road Tonbridge Kent TN9 2HS Tel: 01622 690690 Web: <a href="http://www.kent.police.uk">www.kent.police.uk</a></p>	<p><b>Kent Fire &amp; Rescue Service</b> The Godlands, Straw Mill Hill, Tovil, Maidstone ME15 6XB Tel: 01622 692121 Web: <a href="http://www.kent.fire-uk.org">www.kent.fire-uk.org</a></p>	<p><b>Police &amp; Crime Commissioner</b> Kent Police HQ Sutton Road Maidstone ME15 9BZ Tel: 01622 677055 Web: <a href="http://www.kentpa.kent.police.uk">www.kentpa.kent.police.uk</a></p>
<p><b>NHS West Kent CCG</b> Wharf House, Medway Wharf Road Tonbridge Kent TN9 1RE Tel: 01732 375200 Web: <a href="http://www.westkentccg.nhs.uk">www.westkentccg.nhs.uk</a></p>	<p><b>Kent Probation Service</b> 17 Garden Road Tunbridge Wells Kent TN1 2XP Tel: 03000 473130 Web: <a href="http://www.kentprobation.org">www.kentprobation.org</a></p>	<p><b>KCC Social Services</b> The Willows Hilda May Avenue Swanley Kent BR8 7BT Tel: 01322 611000 Web: <a href="http://www.kent.gov.uk">www.kent.gov.uk</a></p>	<p><b>KCC Children and Families Information Service</b> Invicta House Maidstone Kent ME14 1XX Tel: 03000 412323 Web: <a href="http://www.kent.gov.uk">www.kent.gov.uk</a></p>
<p><b>KCC Youth Offending Service</b> IH3 Invicta House Sessions Square Maidstone Kent ME14 1XX Tel: 01622 694465 Web: <a href="http://www.kent.gov.uk">www.kent.gov.uk</a></p>	<p><b>KCC Youth Service</b> Area Youth Officer C/o Swanley Youth Centre St. Mary's Road Swanley Kent BR8 7BU Tel: 01322 615275 Web: <a href="http://www.kent.gov.uk">www.kent.gov.uk</a></p>	<p><b>KCC Trading Standards</b> PO Box 286 West Malling Kent ME19 4HW Tel: 01732 525291 Web: <a href="http://www.kent.gov.uk">www.kent.gov.uk</a></p>	<p><b>KCC Community Safety</b> Invicta House County Hall Maidstone ME14 1XX Tel: 01622 221106 Web: <a href="http://www.kent.gov.uk">www.kent.gov.uk</a></p>
<p><b>West Kent Housing Association</b> 101 London Road Sevenoaks Kent TN13 1AX Tel: 01732 749400 Web: <a href="http://www.westkent.org">www.westkent.org</a></p>	<p><b>Kenward Trust</b> Kenward Road Yalding Maidstone Kent ME18 6AH Tel: 01622 814187 Web: <a href="http://www.kenwardtrust.org.uk">www.kenwardtrust.org.uk</a></p>	<p><b>MOAT Homes</b> Galleon Boulevard Crossways Dartford Kent DA2 6QE Tel: 0845 600 1006 Web: <a href="http://www.moat.co.uk">www.moat.co.uk</a></p>	<p><b>Kent Drug and Alcohol Action Team</b> Invicta House County Road Maidstone Kent ME14 1XX Tel: 01622 221676 Web: <a href="http://www.kdaat.org.uk">www.kdaat.org.uk</a></p>
<p><b>West Kent Extra</b> 101 London Road Sevenoaks Kent TN13 1AX Tel: 01732 749400 Web: <a href="http://www.westkent.org">www.westkent.org</a></p>	<p><b>Voluntary Action Within Kent</b> 19 Monson Road Tunbridge Wells Kent TN1 1LS Tel: 01892 530330 Web: <a href="http://www.vawk.org.uk">www.vawk.org.uk</a></p>		

## Terms of Reference

The Partnership's terms of reference are to:

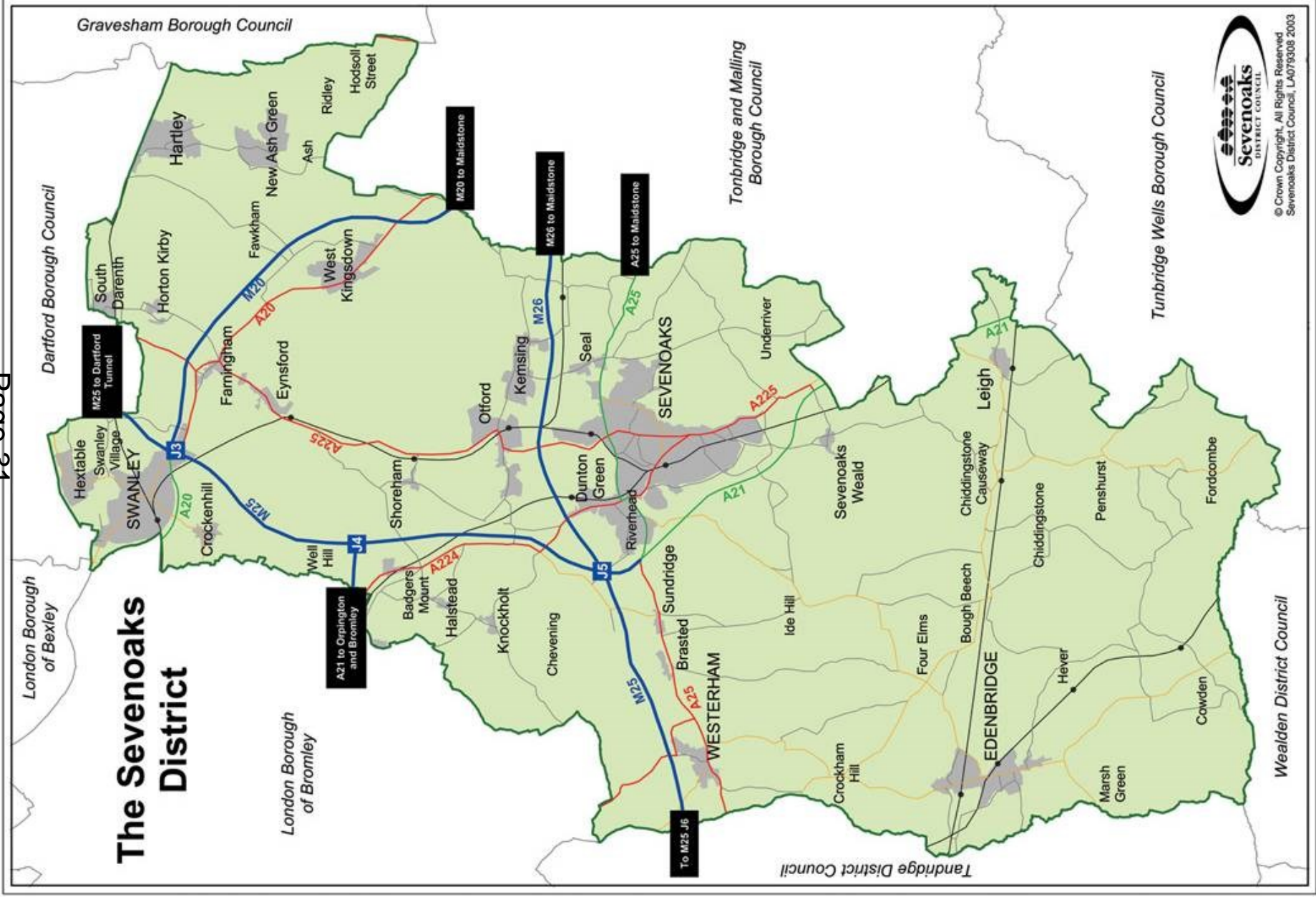
- Undertake periodic reviews of community safety in the District and disseminate the findings to the public
- Develop a yearly strategy and action plan to tackle community safety
- Monitor and report progress in meeting the agreed targets and actions
- Secure resources and funding from parent organisations and others for projects to address agreed shared priorities in the Community Safety Action Plan
- Act as a forum for discussion of topical local community safety issues and agree follow up actions if appropriate
- Promote community safety in the District in conjunction with other local organisations and bodies
- Co-ordinate and maintain an overview of all activities relevant to community safety in the District.

**Structure of Sevenoaks District Community Safety Partnership**





Sevenoaks District map



**Enquiries to:**

Community Safety Manager  
Sevenoaks District Council  
PO Box 183, Argyle Road  
Sevenoaks, Kent TN13 1GP  
Telephone 01732 227000  
Fax 01732 742339  
Minicom 01732 227496  
E-mail [community.safety@sevenoaks.gov.uk](mailto:community.safety@sevenoaks.gov.uk)

